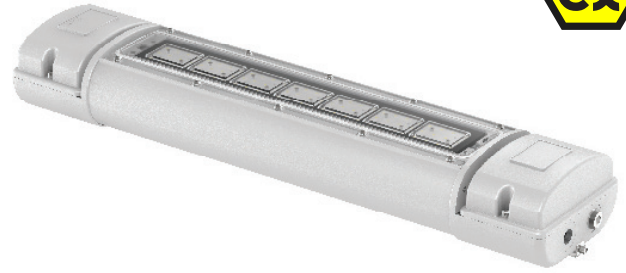




# SPARTAN

## LINEAR WL84



## LED Hazardous Area Linear Luminaire Standard and Emergency variants

The SPARTAN Linear range is designed specifically for use in new hazardous area installations or to retrofit existing fluorescent installations which require high performance, reliable, White-Light illumination. Housed in Marine Grade aluminium and using Raytec's field-proven, long-life LED technology, SPARTAN Linear is ATEX and IEC Ex approved for all Zone 1 and Zone 2 applications and rated for T4, T5 and T6 environments.

SPARTAN Linear's overall dimensions, fixing centres and gland entries are all compatible with commonly used traditional Ex e 2x36W fluorescent luminaires. The lumen output and light distribution also allows a direct, easy replacement of traditional fluorescent luminaires, meaning the customer can upgrade without complication and enjoy all the benefits of long life LED lighting while making regular lamp changes redundant.

SPARTAN Linear is available as an emergency variant, and standard variants can be converted to an emergency fitting at any time on-site, thanks to a unique modular design. This design also means key components can be easily accessed and serviced if required to make inspection and maintenance quicker and easier. SPARTAN Linear has a clear polycarbonate diffuser which is also available in various degrees of opaqueness to provide greater flexibility during installation.

SPARTAN uses CoolExtrude™ thermal management technology, ensuring a much cooler LED operating temperature and up to 60% better heat dissipation compared to traditional lighting solutions, allowing the product to operate for > 10 years while still delivering a high lumen output of up to 2,500 lumens.

## Key Features

- ATEX & IEC Ex approved – Zone 1 and Zone 2 (UL/CSA pending, including C1D2)
- Retrofittable
- Emergency variants
- Ultra long life LED
- High lumen output LED
- Easy installation, maintenance and inspection
- Wide operating temperature range of -40° to +55°C
- Available as portable unit
- 5 year warranty

## Why Raytec

- UK Designed & Manufactured
- Manufacturing precision engineered LED products
- Worldwide distributor support
- Lighting design and full technical support
- ISO9001 and ISO140001 accredited
- Award Winning Technology

## Technical Specifications

### Certification

ATEX Rating:	ATEX and IEC Ex rated for Gas and Dust
Hazardous Area rating:	Zone 1 & 2 – Gas and Dust
Certificates:	CML14ATEX3119 & IECEx CML 15.0001 UL/CSA pending, including C1D2
Gas:	II 2 GD Ex emb IIC T5 or T4 Gb Ta -40°C to +55°C (-20°C emergency variants) II 2 GD Ex emb IIC T6 Gb Ta -40°C to +48°C (-20°C emergency variants)
Dust:	Ex tb IIIC T82°C Db IP66 & IP67 - Ta -40°C to +55°C (-20°C emergency variants)

### Electrical

Input:	110-254V 50/60Hz AC only Low voltage option also available for standard variants only - 18-30V AC/DC
Power:	Standard - 34W Emergency - 37W
Termination:	Incoming terminal block at each end suitable for looping and through wiring 4 core 4mm <sup>2</sup> cable
Power Factor:	>0.95
Cable entries:	2xM20 cable entries at both ends, through wired as standard (other entries available upon request), dispatched complete with three ATEX/ IEC Ex approved blanking plugs

### Optical

Lumen output on mains:	Up to 2,500 lm
LED type:	Platinum SMT LEDs
Number of LEDs:	84 LEDs
CRI:	70+

### Mechanical/Environmental

Burning position:	Universal
IP rating:	IP66 & IP67
Temperature range:	-40°C to +55°C (-20°C emergency variants)
Weight:	Standard - 6kg (13.2lbs) Emergency - 7kg (15.4lbs)
Enclosure:	Marine grade aluminium epoxy powder coated, tough polycarbonate diffuser, all external fasteners and brackets are marine grade stainless steel
Unit Colour:	Silver (RAL 9006) Red (RAL3024) - Emergency cover
Installation instructions:	Raytec 920-M-0036
Dimensions:	772x 108 x 174mm (30.4 x 4.3 x 6.9")
Mounting:	Via M8 tapped holes. Various mounting arrangements available (please see product overview guide)

### Emergency

Duration:	Up to 3hrs @ 50% power Other options available
Battery:	Ni/Cd 12V
Charge time:	20 hours

## Product Dimensions

